

VARIABLE SECTION FORMWORK FOR CONCRETE PILLARS



Pillars

Machine for concrete elements production

VARIABLE SECTION FORMWORK FOR CONCRETE PILLARS

DESCRIPTION OF THE MACHINE (N.2 PCS AVAILABLE)

Variable section formworks for concrete pillars production equipped with universal flat bed with stations for opening and closing of sides, with a length of 26 metres each.

With these formworks it is possible to build pillars with section variable from 50 to 120 cm.

The two formworks are complete with sides, in which fittings for brackets are mounted and base plates are manually height-adjustable

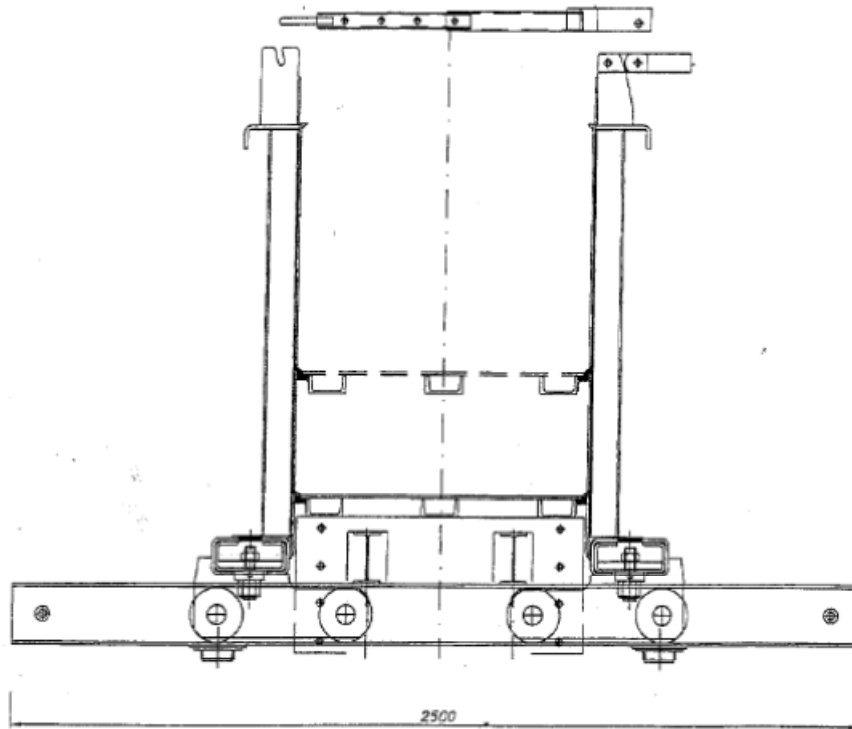
TECHNICAL FEATURES:

- Total length 26 metres each (n. 2 modules of 13 metres);
- Total width 2,5 metres;
- Complete with:
 - Lateral sides that can be opened through sliders moved by oleo-dynamic cylinders;
 - Air vibrators located on lateral sides;
 - Flat beds;
 - Hold – casting heads with dimensions: 1200x800 / 1000x600 / 700x600 / 900x800;
 - Base plates width 600 / 700 / 800 / 1200;
 - Backing sides for reducing the pillar section to be achieved (to mount on sides);
 - n.1 oleo-dynamic control unit having the function of opening and closing the lateral sides **(sole control unit to command the two formworks 26 metres long)**;
 - Hold – casting heads for connecting “H” beam;
 - Hold – casting heads for connecting “T” beam;

The formwork was tested and it is in excellent operative conditions.

For further details, please contact the Technical Department.

TYPICAL SECTION OF FORMWORK FOR PILLARS

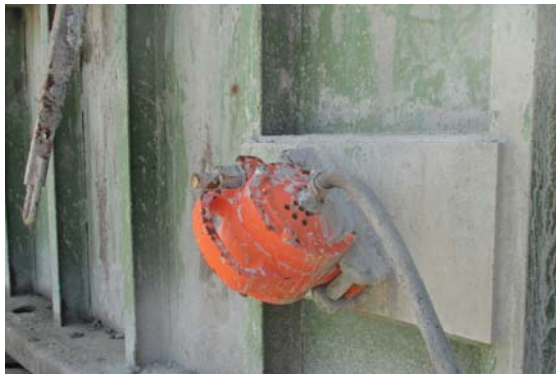


PICTURES OF FORMWORK FOR PILLARS





Oleo-dynamic control unit
(sole to command the 2 formworks 26 meters long)



Air vibrators located on lateral sides



PICTURES OF ACHIEVABLE PRODUCTS WITH FORMWORK FOR PILLARS

